



SHOOLIN[®]
CHEMICALS

AN ISO 9001 : 2015 CERTIFIED COMPANY

PRODUCT INFORMATION GUIDE



EXCELLENCE BY TECHNOLOGY

One Place One Destination for all Waterproofing Solution



PRODUCT RANGE

Waterproofing chemicals
Water repellents
Concrete admixtures
Sealants
Tile adhesive
Grouts
Speciality coatings
Industrial floor hardener and coatings
Membranes
Other Construction Chemicals



COMPANY PROFILE

SHOOLIN is founded by young and dynamic technocrats and experts having more than two decades experience in related business and trade. is one of the leading players in the field of Construction Chemicals and provide eco-friendly, high quality and cost-effective products to our respected customers.

SHOOLIN is one of the fastest growing business group in India. The group is already engaged in number of activities including manufacturing and trading of Building and construction material, construction equipment and machinery and Chemicals.

The SHOOLIN group recently entered in to manufacturing of range of adhesive including Construction & Water proofing Chemicals, Adhesives and other construction material.

SHOOLIN has constructed state of art and ultra-modern plant at Gujarat with international standard. The company has strategically placed stock points and well- equipped warehousing facilities, with a well spread Distribution Network across India sufficiently stocked with various products & grades, to provide prompt uninterrupted services to our respected customers.

The plant is equipped with latest machinery and equipment and laboratory has the all sophisticated and hi-tech equipment which enable SHOOLIN TO PRODUCE HIGH QUALITY and world class products.

SHOOLIN team is constituted of highly experienced and active technocrats and scientist. The team is highly qualified and knowledgeable to develop and produce world standard product. The team has set up a world class research and development center at the plant. Even today SHOOLIN continues to upgrade its technical and team skill to develop new products and application...

PRIME ROOFMEMBRANE S-901

Acrylic Liquid Water Proofing Membrane

Conforms to ASTM D-6083 : 2018



PACKING

5 KG
20 KG
50 KG
200 KG

DESCRIPTION: PRIME ROOFMEMBRANE S-901 is a liquid membrane, which is a highly elastic, solvent free, natural rubber like ACRYLIC water proofing system. It is a one component and not a complicated mixture. It is supplied ready-to-use for cold application. It forms flexible coating, which can be painted over if a light, reflective surface is preferred. PRIME ROOFMEMBRANE S-901 contains no solvent and is suitable for both indoor and outdoor sealing.

FEATURES / ADVANTAGES

- It dries to form a seamless, highly elastic and waterproof membrane.
- It is suitable for horizontal and vertical surfaces- above and below ground.
- It bridges surface stresses and hairline cracks.
- It adheres well to dry, wet, absorbent and non-absorbent surfaces.
- It is resistant to all-dilute acids or alkali, fumes or fluid gases commonly encountered in the construction industry.
- It is cold and heat resistant to weathering and aging, remains durable, elastic and waterproof.
- In normal roof layer construction it is not affected by spark or radiant heat.
- It is not damaged by roots and not attacked by rodents.

APPLICATIONS

- Basement waterproofing
- Roof waterproofing, terrace balconies
- Roof super structures & connections
- Flat or sloping roofs
- Retaining walls
- Under ground structures, damp / wet rooms flat or sloping roofs
- Foundations

BLACK SHIELD 602

Rubberized Elastomeric Waterproof Liquid Membrane

DESCRIPTION: SHOOLIN Black Shield 602 is cold applied liquid waterproofing membrane specially formulated from a blend of special resin and rubber, reinforced with special water repelling fillers, minerals, stabilizers and gelling agent.

FEATURES

- Unique Additives added to make it durable.
- Superior wetting & adhesion properties.
- Adapts itself over the irregular deck contours.
- Single Component, Cold Applied and Highly Elastic Rubber Like Membrane.

BENIFITS

- Ensures durable bond & resists peeling, chipping, hence lasts longer.
- Highly Resistance to oxidation, UV & ozone.
- Requires no mixing or heating, saves labour costs.
- Forms a impervious & waterproof blanket.
- Withstands expansion/contraction & deck movements, Resists Crack.

USAGE: Ideal for waterproofing Concrete roofs/polyurethane foam slabs/polyester built up roofs/Maintenance of existing roofs, masonry and concrete walls/ Bathrooms/ Basements/ Bridges/ Decks/Metal surfaces etc. Popularly used as a sandwich membrane in new construction and as surface treatment on existing slabs.



PACKING

5 KG
20 KG
50 KG
200 KG

WALL PROTECT PLUS

Elastomeric Waterproof Coating

Conforms to ASTM D-6083 : 2018

DESCRIPTION: WALL PROTECT PLUS is an Acrylic based highly elastomeric waterproof coating. After drying it forms a film of exceptional strength and flexibility that prevents peeling, fungi/algae growth, future cracks and water seepages. WALL PROTECT PLUS bridges cracks effectively and it is ultraviolet resistant.

FEATURES / ADVANTAGES

- Possess elongation properties to bridge existing cracks and prevents future cracks with absolute finality.
- Remarkable elasticity and resilience for substrate's thermal expansion and contraction.
- Optimized rheology for high film build Breathability for preventing moisture in walls and roofs (MICROPOROUS).
- Can be applied on damp surfaces.
- Can be used on coastal areas and gives corrosion protection to rebar's hence possesses Anti-carbonation properties Excellent alkali resistance.
- Resistance to chalking and flaking.
- UV resistant for outstanding durability.

APPLICATIONS AREAS

- Exterior RCC surface
- Masonry walls or facades
- Stone walls
- Asbestos China mosaic tiles
- Sloping roofs



PACKING

5 KG
20 KG
50 KG
200 KG

SHOOLIN PU COAT-1K

Premium Quality Hybrid Water Base PU Membrane

Conforms to ASTM C 836 : 2018 & ASTM D 6083 : 2018



PACKING

5 KG
20 KG
50 KG
200 KG

DESCRIPTION: High Performance, Polyurethane hybrid UV stable, Eco-friendly Flexible, Water-based modified waterproofing membrane based on an advanced polyurethane modified water based Polymer which is a proven solution for Weatherproofing & waterproofing applications for Use in roofing, basement, retaining walls etc.

ADVANTAGES

- Water based for easy clean up in water.
- Flexible Class 3 membrane (35%+Elongation).
- Eco-Friendly low odour for easy use without irritation.
- Fast drying can be recoated after 3-5 hours at normal room temperature.
- UV stable non yellowing can be used externally.
- PU-1K can be used both internally and externally.
- Compatible works well with many cement based tile adhesive.
- Excellent crack bridging properties.

APPLICATION: Suitable for use on many porous substrates including Gyprock, fibre cement, concrete, render brickwork, render and plasterboard. PU-1K+ can be used to help water/damp proof basements, kitchens, bathrooms, balconies and decks, shower recesses, repair and restoration of leaking roofs as well as a damp proof membrane in sandwich panel construction. It is also suitable for Deck areas & can be used in planter boxes and retaining walls as long as it is protected by drainage or Corflute.

SHOOLIN CLEAR COAT

Lamination Coat

Conforms to IS 12027 : 1987



PACKING
1 KG
5 KG
20 KG

DESCRIPTION: SHOOLIN Lamination coatings can be considered aesthetically equivalent to bicomponent acrylic and polyurethane solvent based coatings. The range is composed of both pigmented and transparent products. In this latter case, the main characteristic is the ability to achieve almost any color without limitation to the shade, with excellent coverage and light stability, thereby overcoming the typical limits of polyester or acrylic UV coatings.

ADVANTAGES

- Transparent protective coating on acrylic base for thoroughly dried paintings.
- Quick-drying, light-proof, no yellowing good adherence, wiping-proof and weather resistant.
- Applicable on wood, cardboard, stone, ceramics and many surfaces.

BENEFITS

- More Durable
- Faster Cure Times
- Less VOC
- Non-Flammable
- Faster Dry Times
- Less Yellowing

PRIME S-CRETE 132

100% Acrylic Modifier

Complies with BS 6319 Part 2, 3 & 4

DESCRIPTION : PRIME S-CRETE 132 is a single component 100% acrylic polymer admixture specially developed to improve the properties of cementitious compositions. When it is used with combinations with standard quality of ordinary Portland cement, it enhances the mechanical properties such as bonding (adhesion) with various building materials, flexural, compression and impact strength. It improves the thin section fragility of cement when used as coating.

FEATURES / ADVANTAGES

- Prime S-crete 132 is easily mixed with cement, cures to hard, tough, weather resistant surface & bonds strongly to most of the building materials.
- Prime S-crete 132 can be over coated by exterior emulsion coating or cement based paints. It can be applied to a uniform thickness coating on horizontal and vertical surfaces.
- Prime S-crete 132 allows trapped water vapor to escape and prevents blistering and adhesion failure.
- It makes cement mortars or coating compact thus preventing salt penetration into concrete.
- It is unaffected by UV light and prevents discoloration of concrete and corrosion in steel due to its alkaline nature. It is resistant to water, dilute acids and alkali solutions. Coating is highly durable even in continuous contact with water.
- It is non-flammable, non-hazardous, does not evolve toxic gases when exposed to fire. Non-toxic to human being.
- Most properties improve on ageing. Resistant to fungus and growth of microorganism.



PACKING
1 KG
5 KG
20 KG
50 KG
200 KG

PRIME SBR LATEX S-50

Super Latex Bonding Agent

Complies with ASTM C-1059 : 2013, TYPE - II

DESCRIPTION: PRIME SBR LATEX S-50 is an emulsion of single component styrene butadiene co-polymer based latex specially developed to improve the properties of cementitious compositions. PRIME SBR LATEX S-50 when used in combination with standard quality of ordinary Portland cement, it enhances the mechanical properties such as bonding (adhesion) with various building materials, flexurals, compression and impact strength. PRIME SBR LATEX S-50 improves the thin section fragility of cement when used as coating. It is resistant to hydrolysis hence can be used for external applications too.

FEATURES / ADVANTAGES

- Increases flexural and tensile strength.
- Compressive strength is comparable with concrete.
- Reduced shrinkage, water permeability.
- Good bonding between old & new concrete.
- High strength mortar with good resilience.
- Durable structural repairs, restoration & waterproofing.
- Improved abrasion resistant flooring.

FEATURES

- Simple to use as it is a single component.
- Cures to a hard, tough & wear resistant surface.
- Bonds (adheres) strongly to the most surface types.
- Can be applied to a uniform thickness coating on horizontal and vertical surfaces.
- Allows trapped water (vapors) to escape and prevents blistering and adhesion failures.
- Makes cement mortar or coating compact which prevents salt penetration into the concrete.
- It is unaffected by UV light and prevents fading of concrete.
- It acts as anti-corrosive for steel. It is highly durable even in continuous contact with water.
- It is resistant to water, dilute acids and alkali solutions.
- It is non-flammable & non-hazardous. Does not evolve toxic gases when exposed to fire.
- Non-toxic to human being.
- Most properties improves on ageing.
- Resistant to fungus and micro-organism growth.



PACKING

1 KG
5 KG
20 KG
50 KG
200 KG

USAGE

- Waterproofing of building, toilets sunken portion basement.
- Waterproofing of water tanks and swimming pools.
- Repairing of concrete and masonry walls- internal, external & terrace roofs by cement mortars.
- Renovation and protection of concrete against corrosion and salt petrel.
- As a bonding agent for old concrete to new concrete, industrial floor or floor duct nosing repair.

SHOOLIN ACF

Acrylic White Crack Filling Compound



PACKING

1 KG
5 KG

DESCRIPTION: SHOOLIN ACF India's first Acrylic Crack Filling Compound is of a professional quality product. SHOOLIN ACF prevents air and moisture from passing through cracks and joint, offers excellent flexibility to resist expansion and contracting without cracking. Paintable with latex and oil based paints. Useful for both interior as well as exterior.

RECOMMENDED USES

- Concrete
- Plaster
- Brick
- Drywall
- Painted surface
- Wood
- Metal

APPLICATION

- Window and Door
- Frames Corner
- Sliding and Trim
- Joints
- Moulding
- Vents
- baseboard
- Other gaps & openings

SHOOLIN 2K

Flexible, two-component cementitious Coating



PACKING
15 KG
30 KG

DESCRIPTION : SHOOLIN 2K is a two component modified acrylic polymer based cementitious waterproof coating system, which on mixing and hardening provides an excellent water resistant barrier it offers excellent resistance to both positive and negative water pressures.

ADVANTAGES

- SHOOLIN 2K is an excellent waterproofing membrane.
- Excellent adhesion to substrate. Bonds to both porous and non porous surface.
- Allows water vapour from the interiors of the substrate to come out ie. breathable.
- It is non-toxic. Suitable for drinking water use.
- It is chloride free hence does not affect RCC.
- It gives a dry film thickness of 1mm thick which provides excellent anti carbonation property.
- It is resistant to atmospheric carbon dioxide and chloride ion diffusion.
- It has got water pressure resistance upto 70meters. (7 bars) water column as per DIN 1048.

APPLICATIONS

- Waterproofing membrane for water retaining structures.
- For Cellars, terraces, bathrooms, walls for artificial lakes etc.
- Waterproofing in swimming pools, water tanks, terraces, sewage effluent tanks etc.
- For foundation and roof waterproofing

USAGE: Apply using a short, stiff bristle brush or roller. It can be applied by trowel also. Care should be taken to see that more than 2.0 kg/m² (1mm thickness thick layers are avoided, as higher thickness tends to provoke cracks in the system. Embed fiber glass mesh for better reinforcement on first coat immediately while the coat is wet. The second coat can be applied after 12 hours or after the previous coating has dried. Application of SHOOLIN 2K has to be followed by a plaster or screed application especially when it is exposed to open traffic on roofs.

PRIMEPROOF IWC-100

Integral Waterproofing Liquid For Cement Concrete & Mortars

Complies IS : 2645 - 2003

DESCRIPTION: PRIMEPROOF IWC-100 is a liquid integral waterproofing additive(Admixture) for cement, concrete and mortar. The waterproofing constituent of the PRIMEPROOF IWC-100 does not dissolved in water in which it is added and remains hardened concrete as a permanent constituent. One of the constituent is water reducing agent which allows the reduction of water content of the concrete mix thus increasing the strength of the concrete while maintaining the workability. It does not alter the setting time of the concrete mortar.

FEATURES / ADVANTAGES

- Increases workability of the concrete mix.
- Reduces capillary action.
- Reduces vapor transmission through walls and slab.
- Nontoxic.
- Does not corrode the reinforcement.
- Makes concrete water light.

APPLICATIONS

- Used in mass concrete.
- Foundation walls.
- Floors.
- Cement stucco.
- Masonry mortars.



PACKING
1 KG
5 KG
20 KG
50 KG
200 KG

PRIMEPLAST SL-909

Chloride Free Water Reducing Plasticizing Admixture

Complies IS 2645 : 2003

DESCRIPTION: PRIMEPLAST SL-909 Is Liquid Plasticizing Admixture (additive) For Cement Concrete Based On Modified Lignosulphonate It Reduces The Water Requirement For Concrete Mix To Attain A Given Workability. It May Be Used To Reduce Cement Content Of Concrete Mix Without Affecting The Strength. It Is An Economical Solution Of Plasticizing Concrete. Primeplast SL-909 Disperses The Cement Particle In The Concrete Mix & Reduces The Water Content To Improve The Durability Of Concrete.

RECOMMENDED USES

- It improves workability of concrete.
- It provides easier handling and finishing.
- Reduces water requirement.
- It improves finished appearance of the hardened concrete.
- Increases strengths of concrete at all ages.
- Reduces shrinkage and permeability.
- It is chloride free hence safe for use in prestressed & reinforced concrete.

DOSAGES: Normal dosage range is 0.1 to 0.25 liter/ 50 kg of cement. The optimum dosage and compatibility of the admixture with the locally available materials has to be ascertained by proper site trials. As an over dose of Primeplast SL-909 will give high retardation but ultimate strength will not be reduced. Compatible with all types of Portland cement, including sulphate resisting, Compatible with all other Admixtures.

TYPICAL APPLIATION

- Ready mixed concrete.
- Pre-stressed concrete.
- Water reducing agent in concrete.



PACKING

20 KG
50 KG
200 KG

PRIME RAPID AC-908

Accelerating Admixture for Cement Concrete and Mortars



PACKING

20 KG
50 KG
200 KG

DESCRIPTION: Prime Rapid AC-908 is a liquid accelerating admixture for cement concrete & mortar. It is designed to accelerate the normal setting time of concrete. It increases early strengths of concrete & mortars. It improves the physical & engineering properties of concrete such as workability. Compressive and flexural strengths. It densifies the concrete and reduces the permeability.

SHELF LIFE & STORE: Store the material cool and dry place (25°C Temp.). Shelf life is one year when materials are stored in unopened containers as per recommended storage conditions.

ADVANTAGES

- Prevent the delay of construction jobs in cold weather.
- Reduces initial setting time of concrete.
- Increases strength of concrete and mortar.
- Improves workability of the concrete.
- It densifies the concrete and mortar.
- It provides high early strength for fast demolding from framework.
- Allows earlier release from precast moulds.
- Non toxic.

TYPICAL APPLICATIONS

- Structural concrete
- Concrete blocks
- Concrete pipes
- Precast items
- Cold weather masonry work fourse in stucco, brick laying, block sand clay tiles laying mortars.

SHOOLIN SEAL GG-100

Polysulphide Sealant, Gun Grade

Complies BS 4254 - 1983



PACKING
1 KG
4 KG
6.5 KG

DESCRIPTION: Shoolin Seal GG-100 is a two-component, non-sagging, non-flowing, polysulfide-based sealing compound. It is a non-staining sealant that cures to a firm, flexible, tear-resistant rubber. Shoolin Seal GG-100 is highly resilient and has excellent recovery characteristics, even after extended periods of compression or elongation. It has outstanding resistance to most chemicals to all weather conditions, aging and shrinkage.

FEATURES

- Non-staining sealant cures to a firm, flexible, tear-resistant rubber
- Highly resilient with excellent recovery characteristics.
- Outstanding resistance to most chemicals, all weather conditions, aging and shrinkage.
- Ideal for short turn-around time applications i.e. pool bottoms, sidewall repairs and high pedestrian and vehicular traffic.
- Used for general purpose caulking, glazing, weatherproofing and curtain wall and joint sealing.
- Supplied in unitized pre-measured packaging (base and setting agent), ready for instant blending.

USAGE: Shoolin Seal GG-100 is a premium quality, flexible sealing compound for use in applications where short turn-around time is a requirement such as pool bottom and sidewall repairs and areas subject to pedestrian and vehicular traffic.

SHOOLIN SEAL PG-100

Poly Sulphide Sealant, Pour Grade

Complies BS 5212, IS 12118

DESCRIPTION: SHOOLIN Seal PG-100 Pour Grade is a two-component Polysulfide Sealant is a chemical resistant elastomeric joint system & also expansion & contraction joint. The Sealant is resistant to many chemicals, shrinkage, aging, thermal stress and the effects of outdoor exposure. The Sealant is capable of providing efficient performance. The Pour Grade Polysulfide Sealant can be availed in various specification.

FEATURES / ADVANTAGES

- Chemical resistant elastomeric joint system.
- Efficient performance.
- Various specifications.
- Resistant so many chemicals, shrinkage, aging, thermal stress and the effects of outdoor exposure.
- Highly resilient with excellent recovery characteristics.
- Provides a uniform, watertight seal.
- Non affected by today's pool chemicals.

USAGE: SHOOLIN Seal PG-100 is used for caulking and sealing joints subject to movement to provide a firm, flexible, weather-tight seal. It is ideal for sealing joints on swimming pool decks. It is applicable for both interior and exterior use. As well as ore used in Bridge. Highlight Builds.



PACKING
1 KG
4 KG
6.5 KG

SHOOLIN PU SEAL GG-40

Single Component Polyurethane Sealant

Complies BS 5212

DESCRIPTION : SHOOLIN PU Seal GG-40 is a one-component, medium-modulus polyurethane sealant that cures on exposure to atmospheric humidity. It possesses excellent adhesion to all typical construction materials such as cement based materials, brick, ceramic, glass, wood, galvanized and painted sheet iron and various plastics.

APPLICATION

- PU Seal GG-40 is used for bonding various construction materials and as a sealing joint.
- Joints around windows.
- Skirting boards.
- Walls and ceilings.
- Door frames.
- External and internal crack filling.
- Saw cut joints in concrete roads and factory floors.

ADVANTAGES

- Possesses permanent elasticity.
- Paintable.
- No sagging-Thixotropic.
- Can be applied with hand gun and tooled easily.
- No surface tackiness after full cure. Does not pick up dirt.
- No shrinkage.
- Conforms to the requirements of VOC content specifications in LEED credit EQc4.1 "Low emitting products" of SCAQMD rule 1168.

COLOUR: • WHITE • GREY • BLACK

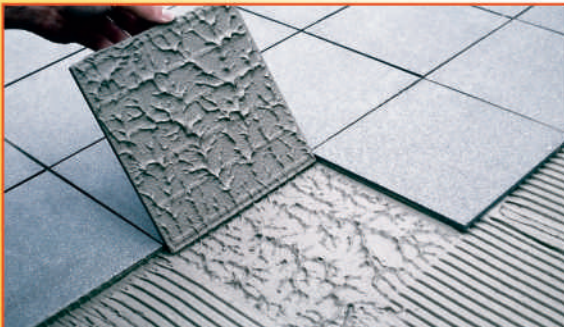


PACKING
600ml
Sausages

PRIME TILEFIX SUPER S-911

Tile Fixing Adhesive

Complies IS 15477 : 2019



PACKING
20 KG

DESCRIPTION : PRIME TILEFIX SUPER S-911 is waterproof tile adhesive and tile mate is a specially formulated adhesive, made from the finest aggregates & the best quality additives. Everything else that is required for a finish that does wonders to a tiling or sledding job and to your reputation.

RECOMMENDED USES

- Does not require wetting of the surface to be tiled.
- The bond strength is superior to that of ordinary mortars.
- Does not require soaking of tiles before fixing.
- Does not require curing of adhesive after fixing.
- Does not require tile battening as tiles can be pressed into position with ease.
- Gives the mason an adjustability time of 45 minutes to correct joint alignments and tile patterns.
- Provides freedom to begin a wall job from the top downwards, without any tile support because its adhesive strength prevents vertical sliding.
- The bond strength is superior to that of ordinary mortars.
- It does not shrink or crack while curing.
- It is water resistant, even remains unaffected by continuous flowing or stagnant water.
- Tiles can be fixed on cement mortars, wood, metal, asbestos sheet surface & even tile on tile.
- Resistant to dilute acids, alkalis and soap water.
- It saves time. Tile fixing job can be completed less than half the time that it takes using conventional mortars.

USAGE

- Tile Fix can be used on both interiors as well as exterior applications.
- For fixing of marbles, mosaic or ceramic tiles, in bathrooms, toilets, swimming.
- Pools and other such areas constantly affected by water.

PRIME TILEFIX PREMIUM S-912

Polymer Modified Tile Fixing Adhesive

Complies IS 15477 : 2019



PACKING
20 KG

DESCRIPTION: PRIME TILEFIX PREMIUM S-912 is a high polymer modified cement base tile adhesive for installing large format VITRIFIED TILES & NATURAL STONES, in internal & external areas for both floor and wall.

RECOMMENDED USES: PRIME TILEFIX PREMIUM S-912 is used for the permanent fixing of Large format tiles & stones.

ADVANTAGES

- It has excellent water and impact resistance.
- Good slip resistance.
- Highly polymer modified.
- Excellent adhesive strength.
- Minimum shrinkage.
- Best workability.

SPECIAL NOTES: Tiling in newly constructed building should not commence until all shrinkage movement and creeping has taken place. Always keep at least 2 mm of gap between two tiles. Direct sunlight, wind or rain should be avoided while application time. Grouting should be carried out for at least 48 hours after completion of tiling.

PRIME TILEFIX S-919 G

High Strength Polymer Added Cement Based Grey Tile Adhesive

Complies IS 15477 : 2019

DESCRIPTION: Prime tilefix 913-W is grey cement based high Polymer modified base tile adhesive for installing large format Natural & Composite marble for horizontal of Vertical substrate for both internal and External Areas.

ADVANTAGES:

- It has excellent water and impact resistance.
- Excellent adhesive Strength.
- Good slip resistance.
- Minimum shrinkage.
- High Polymer modified.
- Best workability.

RECOMMENDED USES: Prime Tilefix 913-w is used for the Permanent Fixing of large format natural of composite marbles.

COLOUR: Grey



PACKING
20 KG

PRIME TILEFIX S-913 W

High Strength Polymer Added Cement Based White Tile Adhesive

Complies IS 15477 : 2019

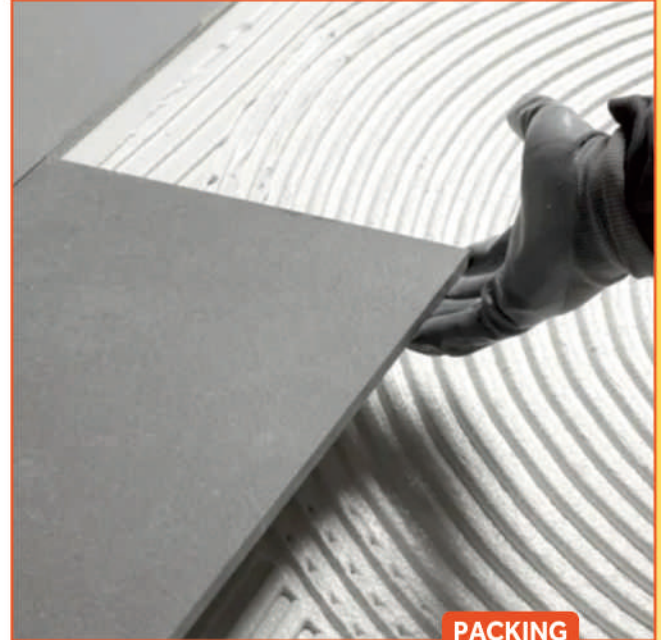
DESCRIPTION: Prime tilefix 913-W is white cement based high Polymers modified base tile adhesive for installing large format Natural & Composite marble for horizontal of Vertical substrate for both internal and External Areas.

ADVANTAGES:

- It has excellent water and impact resistance.
- Excellent adhesive Strength.
- Good slip resistance.
- Minimum shrinkage.
- High Polymer modified.
- Best workability.

RECOMMENDED USES: Prime Tilefix 913-w is used for the Permanent Fixing of large format natural of composite marbles.

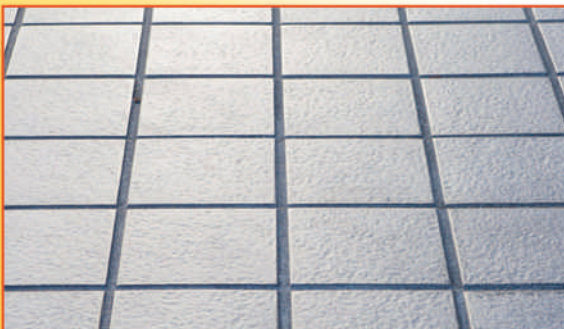
COLOUR: White



PACKING
20 KG

SHOOLIN TILEMATE EP S-900

High Performance Three / Two Component Epoxy Tile Grout



DESCRIPTION: Epoxy grout is hygienic, stain-resistant, 3 Component epoxy resin based grout with a high degree of Resistance of chemical attack, abrasion and impact. the cured grout does not transfer taints to food products, prevents the entry of bacteria or dirt and is easily maintained in a sterile condition epoxy grout is designed for grouting glazed. tiles, mosaic, vitrified and fully vitrified. tiles, Ceramic tiles, Industrial tiles, granites marble & other natural Stones etc.

FEATURES

- Hygienic and Chemical resistant.
- Stain and bacterial resistant.
- Can be cleaned off in 15 min. ant up to 60 min. after application.
- Suitable for Submerged Condition.
- Suitable for Joint width of 1-12 mm.
- available in a wide range of colours.

AREA OF APPLICATIONS

- Walls and floors.
- Interior and Exteriors.
- Dry Areas.
- Swimming pools.
- Heavily Trafficked Floors.
- Hygienic sterile Areas.
- Kitchens and cafeterias.



PACKING
1 KG
5 KG

SHOOLIN TILEMAT TG

Polymer Modified, Cement Based, Tile Joint Filler



PACKING

- 1 KG
- 5 KG

DESCRIPTION: A ready mixed, flexible, cement based Powder that contains additives which improve water resistance and workability It has been specially formulated to provide low shrinkage.

FEATURES / ADVANTAGES:

- Ready to use only water to be added.
- Suitable for wide grouting up to 5 mm.
- Non Sagging easily to vertical Surfaces.
- Excellent adhesion.
- For indoors and outdoor use.

COLOUR: Available in standard Colors

POT LIFE: 15 ±5 minutes.

SHOOLIN T-CLEAN

Heavy Duty Tile and Machinery Cleaner

DESCRIPTION: SHOOLIN T-CLEAN is a special liquid, inhibited, water based, pre-soaked alkaline cleaner for frictionless cleaning system. T-CLEAN is specially formulated to clean effectively Tile surfaces. T- CLEAN is also used for many other industrial cleaning like spot remover etc.

APPLIATION: Cleaning of concrete surfaces, ceramic tiles, vitrified tiles, Granites, Toilet bowls, Ceramic sinks and wash basin.

ADVANTAGES:

- Multipurpose cleaning agent.
- Its quick action make loosens and helps to remove oil, grease firm and grime.
- Keeps surfaces intact.
- Fast acting formula.
- T-CLEAN is also used for many other industrial cleaning like spot remover, and all purpose pressure washing detergent. etc.



PACKING

1 KG

SHOOLIN BLOCK BOND ADHESIVE

Ready To Use Non Shrink, Self Curing Mortar

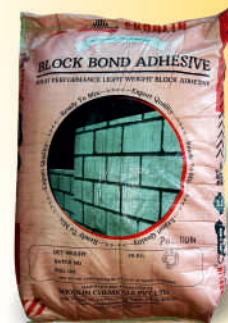
Complies with ASTM C 1660 - 09

DESCRIPTION: Ready to use grey Cement based non-shrink, Self Curing mortar for fixing AAC blocks, Concrete blocks, fly Ash bricks etc.

FEATURES / ADVANTAGES

- Ready to use, only water to be added.
- Thinner Jointing material with very high tensile adhesion strength improving the overall masonry strength.
- Better bond than Conventional Cement based mortar.
- Faster to apply due to good spreadable Properties.
- Excellent high strength of water Retention Properties.
- Self Curing

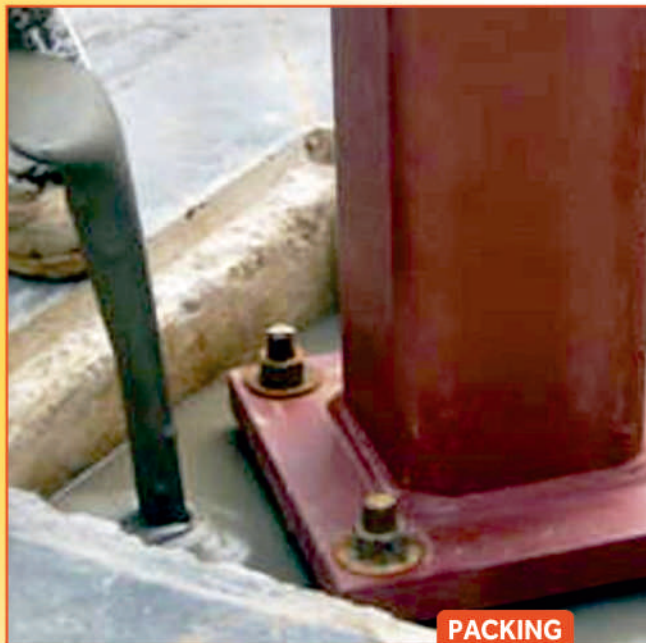
USAGE: Fixing and Jointing masonry units like AAC blocks, Concrete blocks, fly Ash Bricks.



PACKING
40 KG

SHOOLIN GROUT 920

High Precision, Non Shrink, Pourable Cementitious Grout



PACKING
30 KG

DESCRIPTION: Shoolin Grout 920 is Cement based single Component, ready to mix, non shrink, ready to use, Pourable and flowable, expanding engineering grout in dry Powder form. It is widely used for precision grouting in engineering objects Subjected to static and dynamic loads.

FEATURES / ADVANTAGES:

- Easy to use, ready to mix Powder.
- Very good flow characteristics.
- Rapid Strength development. Easy to mix only add water.
- Impact and vibration assistant.
- Non corrosive.
- Non toxic.
- Shrinkage Compensated.

USAGE:

- To Grout bearings, machines foundation, Columns Joints in precast construction etc.
- To Grout Anchors in concrete.
- To Grout base plate of turbine, Compress as boilers, Pumps and heavy machinery.
- Sealing around penetrations.
- To Grout Cavities, gaps and voids in concrete.

SHOOLIN EIG

High Strength Low Viscous Epoxy Injection Grout



DESCRIPTION: Shoolin EIG is two port, Solvent free, Low Viscosity epoxy resin System is mixed in the Proportions Supplied to form a Strong Permanent bond and seal in cracks in concrete and masonry this product is designed to be injected in to Cracks using Suitable resin injection equipment.

ADVANTAGES

- Low viscosity allows penetration into the finest Cracks.
- Formulated for hot climates.
- Suitable for structural repairs.
- Excellent bond to Concrete, brick and masonry.
- Minimum creep under sustained load.
- Resistant to wide range of chemicals.
- Non Shrink, adheres with no loss of bond.

RECOMMENDED USES: Shoolin EIG is designed to seal and bond Cracks in Concrete and masonry.

SHOOLIN - EPC - FG

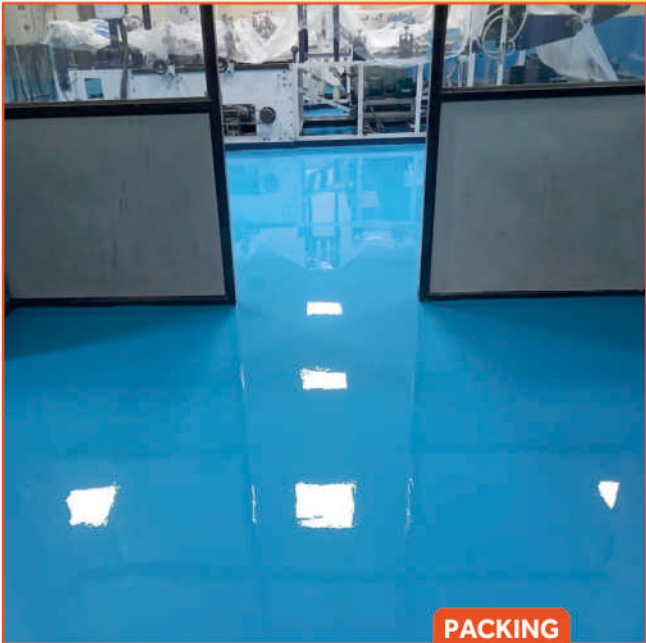
High Build Solvent Free Food Grade Epoxy Coating

DESCRIPTION: Shoolin EPC - FG is a two Component, Solvent Free, epoxy resin self Smoothing chemical resistance food grade flooring system. It has excellent adhesion qualities, Chemical resistant and glossy Finish and easily cleaned.

ADVANTAGE

- Excellent wear under heavy traffic.
- High flow characteristics Combined with an attractive Self Smoothing Finish.
- Fast application minimizes downtime.
- Chemically resistant - good resistance to a wide range of chemicals.
- Hygienic and food grade coating-Provides a dense, impervious, Seamless floor Surface which is easily cleaned.
- Attractive-available in a wide range of Colors to enhance the working environment.

USAGE: Shoolin EPC - FG is designed for use in wide range of industrial hygienic environments & potable water tanks & pipes. It provides a dense, impervious, colored and Chemically resistant floor and wall Surface which is hygienic and easy to clean.



PACKING
1 KG
5 KG

SHOOLIN BOND HV 30-36

HVAS Duct Insulation Coating

DESCRIPTION: Shoolin Bond HV 30-36 is a Commercial water based Coating for Duct Insulation. It is washable, tough, and abrasion resistant. Its acts as lagging and lap adhesive for Canvas and glass reinforcing Cloth due to its excellent brushing characteristic It provides excellent brushing characteristics.

FEATURES

- Good adhesion and high strength.
- Washable and water resistant.
- Compatible with Polystyrene and Poly Urethane Foam insulation.
- Non Toxic and non flammable.
- UV resistant.
- Antibacterial and antifungal.

USAGE: It is used for outdoor as well as indoors thermal insulation material on metal Duct, in areas where with high humidity and elevated temperature are major problems. It may be applied to the joints or edge of fibrous duct liner insulation to seal and prevent air erosion.

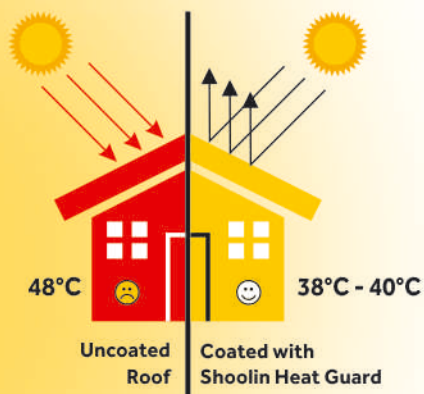


PACKING

5 KG
25 KG

SHOOLIN HEAT GUARD

Heat Insulating Elastomeric Exterior Coating



PACKING
20 KG

DESCRIPTION: SHOOLIN HEAT GUARD is a single component heat reducing elastomeric acrylic coating composed of acrylic resin, ceramic hollow micro sphere, pigments, reinforced fillers and additives. It is used as a waterproofing and heat reflective coating on roofs and exterior walls resulting in substantial reduction in power consumption, due to its good SRI value.

FEATURES

- Excellent UV and IR resistance-Enhance environmental protection.
- Algae and fungus resistance-long lasting film properties
- Substrate temperature reduction up to 10.C in the peak summer
- Protective and waterproofing-keeps the concrete slabs surface temperature lower hence reduction in thermal stresses and subsequent development cracks.

ADVANTAGE

- Ensures durable bond & resists peeling, chipping, hence lasts longer.
- Highly Resistance to oxidation, UV & ozone.
- Provide insulation or cooling effect.
- Eliminates costly forms of other roofing system.
- Withstands expansion/contraction & deck movements, Resists Crack



SHOOLIN CHEMICALS PVT. LTD.

AN ISO 9001 : 2015 CERTIFIED COMPANY

CORPORATE OFFICE:

R-731, Vijay Nagar,
Indore - 452 010 (M.P.) INDIA
Ph.: 0731-4043099 | Mob.: 6260971460
Email: sales@shoolinchemicals.com,
support@shoolinchemicals.com
www.shoolinchemicals.com

